

# Stromal biology and therapy in pancreatic cancer

Albrecht Neesse,<sup>1</sup> Patrick Michl,<sup>2</sup> Kristopher K Frese,<sup>1</sup> Christine Feig,<sup>1</sup> Natalie Cook,<sup>1</sup> Mike A Jacobetz,<sup>1</sup> Martijn P Lolkema,<sup>1</sup> Malte Buchholz,<sup>2</sup> Kenneth P Olive,<sup>3</sup> Thomas M Gress,<sup>2</sup> David A Tuveson<sup>1</sup>

<sup>1</sup>Li Ka Shing Centre, Cambridge Research Institute, Cancer Research UK, Cambridge, UK

<sup>2</sup>Department of Gastroenterology, Endocrinology and Metabolism, Philipps-University, Marburg, Germany

<sup>3</sup>Department of Medicine, Dept. of Pathology, and Herbert Irving Comprehensive Cancer Center, Columbia University Medical Center, New York, New York, USA

## Correspondence to

Dr David Tuveson, Li Ka Shing Centre, Cambridge Research Institute, Cancer Research UK, Robinson Way, Cambridge CB2 0RE, UK; [david.tuveson@cancer.org.uk](mailto:david.tuveson@cancer.org.uk)

Prof Thomas Gress, Division of Gastroenterology, Endocrinology and Metabolism, University Hospital Giessen and Marburg, Campus Marburg Philipps University, Marburg, Baldinger Strasse, 35043 Marburg, Germany; [gress@med.uni-marburg.de](mailto:gress@med.uni-marburg.de)

Published Online First  
21 October 2010

## ABSTRACT

Pancreatic ductal adenocarcinoma (PDA) is an almost uniformly lethal disease. One explanation for the devastating prognosis is the failure of many chemotherapies, including the current standard of care therapy gemcitabine. Although our knowledge of the molecular events underlying multistep carcinogenesis in PDA has steadily increased, translation into more effective therapeutic approaches has been inefficient over the last several decades. Evidence for this innate resistance to systemic therapies was recently provided in an accurate mouse model of PDA by the demonstration that chemotherapies are poorly delivered to PDA tissues because of a deficient vasculature. This vascular deficiency correlated with the presence of a dense stromal matrix that is a prominent histological hallmark of PDA tumours. Therapeutic targeting of stromal cells decreased the stroma from pancreatic tumours, resulting in increased intratumoral perfusion and therapeutic delivery of gemcitabine. Stromal cells contained within the PDA tumour microenvironment therefore represent an additional constituent to neoplastic cells that should be critically evaluated for optimal therapeutic development in preclinical models and early clinical trials.

## INTRODUCTION

Pancreatic ductal adenocarcinoma (PDA) is one of the most lethal human malignancies.<sup>1</sup> The rapid clinical decline commonly observed in patients with pancreatic cancer has been ascribed to both the aggressive biological nature of PDA and to the ineffectiveness of systemic therapies available for patients with advanced disease.<sup>2–3</sup> Indeed, even among patients with pancreatic cancer who undergo surgery and adjuvant chemotherapy, the median survival rate for those with clean microscopic surgical margins (R0 resection) is approximately 2 years, with a 5-year survival of 15–20%.<sup>4–6</sup> One explanation for the poor response of patients to systemic therapies was recently provided in an accurate mouse model of PDA by the demonstration that chemotherapies are poorly delivered to PDA tissues because of a deficient vasculature.<sup>7</sup> This vascular deficiency correlated with the presence of the dense stromal matrix that makes up the bulk mass of PDA tumours, and chemical inhibition of stromal cells decreased the matrix and increased intratumoral perfusion and therapeutic delivery. Stromal cells contained within

the PDA tumour microenvironment therefore represent an additional constituent to neoplastic cells that should be critically evaluated for optimal therapeutic development.

Pancreatic carcinogenesis is currently understood as a multistage process characterised by the accumulation of genetic alterations accompanied by typical morphological and histological changes in pancreatic ductal cells. Activating mutations in the *K-ras* gene occur early during malignant transformation, followed by subsequent somatic mutations involving the tumour suppressor genes *p16*, *p53* and *DPC4*.<sup>8–9</sup> In addition, approximately 10% of all patients have an inherited predisposition to the development of PDA, and this has been partially ascribed to several germline mutations including *BRCA2*, *STK11/LKB1*, *p16/CDKN2A* and *PRSS1*.<sup>10</sup> On the basis of these histopathological and molecular studies, a model similar to that of the adenoma-carcinoma sequence in the development of colon cancer<sup>11</sup> was proposed to describe the progression from normal pancreas via preneoplastic lesions to invasive cancer.<sup>9</sup> According to their stepwise accumulation of histopathological and molecular alterations, the preneoplastic lesions have been classified as pancreatic intraepithelial neoplasms (PanINs) 1a/b, 2 and 3.

The knowledge of high-grade PanIN lesions that are known to be a risk for developing PDA has led to early pancreatectomy; however, the impact of survival on such patients is currently unknown,<sup>12</sup> and the extension of this concept to the general population has not been feasible. In addition, there have yet to be any effective molecular therapies reported based upon our knowledge of the PanIN progression scheme.

After decades of intensive efforts in genomic research focusing on molecular alterations in tumour cells,<sup>13</sup> attention has increasingly expanded to include the tumour microenvironment, in particular the stromal cells. Many epithelial tumours including breast, prostate and ovarian cancers exhibit a prominent desmoplastic reaction with accumulation of stromal cells. Among them, pancreatic cancer displays the most extensive stromal reaction accounting for up to 90% of the tumour volume. Several notable studies have provided evidence that the microenvironment co-evolves with transformed epithelial cells in different carcinomas.<sup>14–20</sup> However, the pathophysiological mechanisms of tumour stromal signalling and its contribution to tumour progression and therapeutic

resistance are still poorly understood in pancreatic cancer and other solid carcinomas.<sup>21–23</sup> Here we discuss recent preclinical models that hold great promise as they allow new concepts for improving the efficacy of chemotherapeutics to be tested rapidly and with high fidelity.

### STROMAL MICROENVIRONMENT IN PDA

One of the most prominent histological features of PDA is the presence of an abundant tumour stroma (figure 1).<sup>24</sup> The stromal microenvironment is a complex structure composed of an extracellular matrix (ECM), activated fibroblasts and myofibroblasts, inflammatory cells and blood and lymphatic vessels that distort the normal architecture of pancreatic tissue. Interactions between the neoplastic and non-neoplastic cells and acellular matrix have been proposed to stimulate the extensive desmoplastic reaction. At the molecular level, stroma production is promoted by the activation of multiple cancer cell-derived signalling pathways such as transforming growth factor  $\beta$  (TGF $\beta$ ), hepatocyte growth factor (HGF/Met), fibroblast growth factors (FGFs), insulin-like growth factor 1 (IGF-1) and epidermal growth factor (EGF) via autocrine and paracrine mechanisms.<sup>25–26</sup> These receptor-mediated signalling cascades lead to secretion of structural matrix components including proteoglycans, collagens and fibronectin as well as catalytically active enzymes such as proteinases.

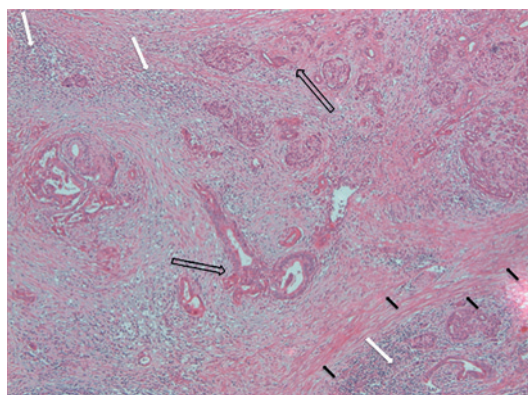
The exact composition of the ECM is regulated by a multitude of different mechanisms. For instance, matrix metalloproteinases (MMPs) are a large family of zinc-containing proteolytic enzymes involved in the degradation, dynamic remodelling and turnover of ECM proteins in physiological and pathological conditions.<sup>27</sup> In particular, MMP-2 and MMP-9 are commonly overexpressed in pancreatic cancer and play an important role in tumour cell migration and invasion by degrading the surrounding ECM.<sup>28–29</sup> Recent evidence suggests that the interplay of extracellular proteinases and their inhibitors in invasion and metastasis is much

more complex than previously anticipated. In particular, the biological functions of proteinase inhibitors extend far beyond their roles as inactivators of their target proteinases. For example, tissue inhibitors of metalloproteinases (TIMPs), in particular TIMP-1 and TIMP-2, are frequently overexpressed in pancreatic cancer and various other malignancies, along with their target proteinases.<sup>30–31</sup> Another example is the serine protease inhibitor SERPINE2 (protease nexin I), which is overexpressed in various gastrointestinal malignancies and promotes ECM production and local invasion of pancreatic tumours *in vivo*.<sup>32</sup> In addition, a multitude of proteins has evolved which modulate the composition of the ECM. Among them, the ECM metalloproteinase inducer (EMMPRIN) stimulates MMP-1 expression in fibroblasts and is frequently overexpressed in various solid tumours correlating with tumour size, stage and prognosis in primary breast and ovarian cancer.<sup>33</sup> In pancreatic cancer, EMMPRIN is expressed on the cell surface and supernatant of EMMPRIN-positive pancreatic cancer cell lines such as MiaPaCa and Panc1 induces MMP-2 synthesis in cultured pancreatic stellate cells (PSCs).<sup>34</sup>

The complex interplay between tumour cells and stroma also leads to distinct changes in the transcriptional programme of the cellular components within the stroma, such as activated fibroblasts, stellate cells and inflammatory cells, which in turn promotes cancer cell motility, resistance to hypoxia and stromal neovascularisation. These effects in stromal cells include altered integrin expression patterns, increased expression levels of cyclooxygenase 2, vascular endothelial factor A (VEGF-A), collagen I and hypoxia-inducible factor-1 $\alpha$ .<sup>35–40</sup>

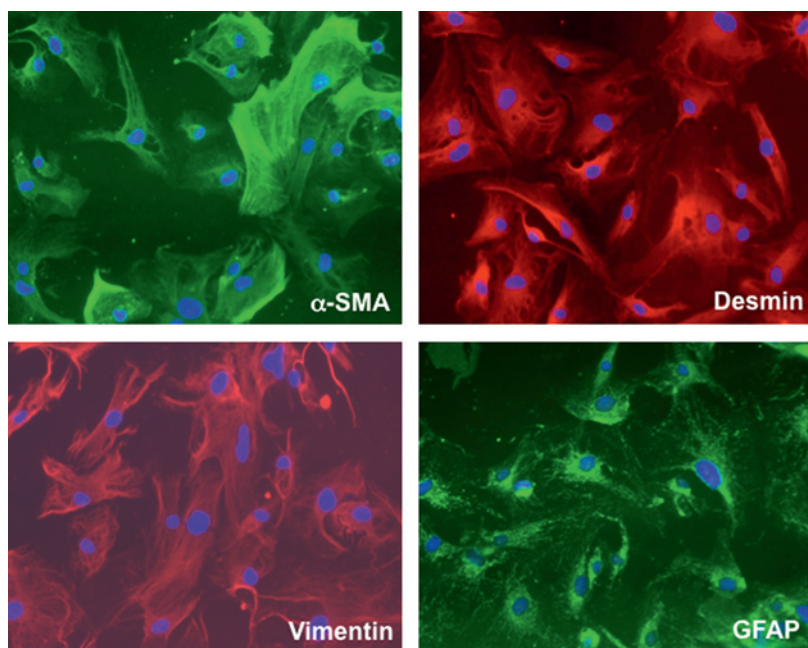
Recently, activation of the developmental sonic hedgehog (SHH) pathway has been identified as another mediator that promotes stromal desmoplasia.<sup>20–41</sup> Binding of SHH ligands to the patched1 receptor relieves repression of the 12-transmembrane domain protein Smoothened (SMO), resulting in activation of the Gli family of transcription factors. SHH is overexpressed in neoplastic cells of human pancreatic tumours<sup>42</sup> while downstream signalling is confined to the stromal compartment, forming a paracrine signalling axis from neoplastic to stromal cells.<sup>43–44</sup>

Interestingly, PSCs have emerged as pancreas-specific mesenchymal cells and important regulators of desmoplasia in pancreatic cancer.<sup>36–45</sup> PSCs share many morphological and functional characteristics with hepatic stellate cells (HSCs) whose central role in liver fibrosis is well established. However, distinct differences in expression patterns were observed between HSCs and PSCs, reflecting organ-specific variations of the common stellate cell-specific phenotype.<sup>46</sup> Isolation and *in vitro* culture of PSCs was first achieved in 1998 and provides a useful platform to investigate the mechanisms mediating epithelial–stromal interactions in pancreatic cancer.<sup>47–48</sup> PSCs are normally located in the space between the acini and endothelial cells and store vitamin A as retinyl palmitate



**Figure 1** H&E stain of human pancreatic ductal adenocarcinoma showing a prominent desmoplastic reaction (black arrows), neoplastic ductal cells (arrows) and inflammatory cells (white arrows).

in lipid droplets.<sup>49</sup> Two different functional stages can be clearly defined in PSCs—the quiescent state and the activated state (or ‘myofibroblastic’ state). In quiescence, PSCs store vitamin A droplets and are characterised by the presence of desmin and glial fibrillar acidic protein. Upon activation by growth factors, cytokines or oxidant stress, PSCs transform into a myofibroblast-like phenotype and secrete excessive amounts of collagen I, III, fibronectin and matrix degrading enzymes such as MMPs.<sup>48</sup> Figure 2 shows immunofluorescence stains of cultured primary human PSCs. Notably, several studies suggest that activated PSCs rather than cancer cells are the main source of MMPs and TIMPs.<sup>50–51</sup> Although proangiogenic molecules such as periostin and VEGF are secreted by PSCs, sustained PSC activation promotes fibrogenesis and ultimately may create a highly desmoplastic, hypovascular and hypoxic tumour microenvironment.<sup>52–54</sup> Interestingly, pancreatic cancer cells induce PSC activation *in vitro* by growth factors such as TGF- $\beta$ 1, platelet-derived growth factor (PDGF) and VEGF.<sup>45–55</sup> *In vivo*, co-injection of PSCs and cancer cells results in increased tumour growth accompanied by a pronounced desmoplastic reaction.<sup>55–56</sup> A recent study using an orthotopic tumour model with co-cultured PSCs and pancreatic cancer cells showed increased migratory potential in both cell types but inhibition of apoptosis in cancer cells only, suggesting a pro-survival and pro-growth mutual interaction.<sup>57</sup> Strikingly, stellate cells were also detected in metastatic foci in the liver of nude mice, suggesting co-migration of PSCs with cancer cells to establish a potentially tumour-favourable microenvironment at distant sites.<sup>57</sup> Figure 3A schematically depicts the various critical pathways involved in the interaction between stromal cells and cancer cells.



**Figure 2** Immunofluorescence stain of cultured primary human pancreatic stellate cells.

The relevance of these findings is underscored by the histological evaluation of clinical specimens indicating that the prognosis and outcome of patients with pancreatic cancer heavily depends on the stromal activity and the ECM composition within the tumours. High activity of myofibroblasts as evidenced by immunohistochemistry against  $\alpha$ -smooth muscle actin or secretion of distinct proteins such as secreted protein acidic and rich in cysteine (SPARC) were associated with a worse prognosis in patients with PDA, highlighting the impact of the stromal microenvironment on disease progression and patient survival.<sup>58–60</sup>

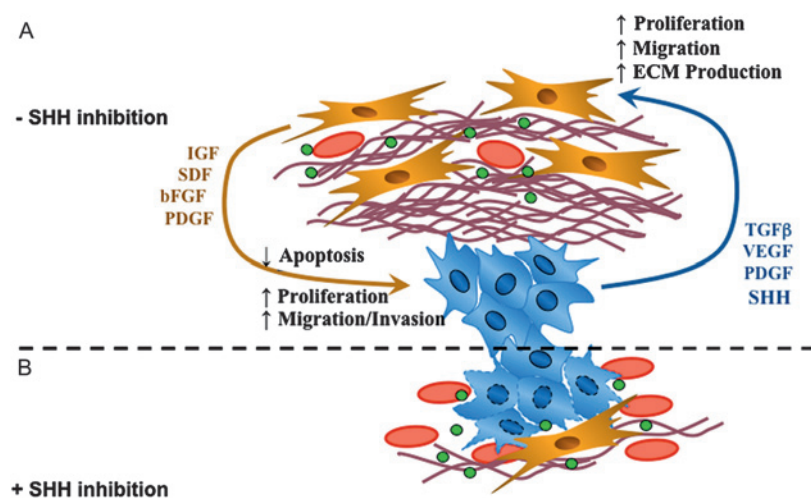
Taken together, the previously held notion that the tumour stroma of PDA is a defensive reaction of the host protecting against invasive growth and formation of metastases has been abandoned. In contrast, a highly dynamic tumour microenvironment is now being proposed that promotes tumour growth and invasion, protects from apoptosis and potentially creates barriers to the delivery of therapeutic compounds.<sup>35–36 61 62</sup>

#### IN VIVO MODELLING OF TUMOUR MICROENVIRONMENT: GENETICALLY ENGINEERED MICE IN PDA

Various mouse models of pancreatic cancer have been developed in the past few years, providing a crucial platform for the investigation of basic biological principles of cancer development and tumour biology.<sup>63</sup> More recently, mouse models of cancer have been increasingly employed to investigate and discover novel preclinical and clinical anticancer agents.

Historically, the most commonly used animal models for PDA were xenograft tumours in immunodeficient mice generated by subcutaneous injection or orthotopic transplantation of tumour cell lines. These models are relatively simple to establish and human cancer cells can be assessed in the murine *in vivo* environment. Recently, primary patient-derived tumour xenografts have been described as a platform to develop personalised drug screening.<sup>64–66</sup> However, major drawbacks of xenograft models include the impaired immune response owing to the need to use immunocompromised mice as hosts, the inability to perpetuate the human tumour microenvironment and the profound differences in tumour structure and vasculature compared with endogenous human PDAs.<sup>67</sup> Accordingly, results obtained from a number of xenograft studies have not translated well into the clinic. For instance, PDA xenografts often respond well to anti-angiogenic agents,<sup>68</sup> but these same agents often fail to show any clinical benefit in the cognate human tumour.<sup>69</sup>

An important milestone in PDA research was therefore the development of genetically engineered mouse models (GEMM).<sup>63</sup> Of special interest are mutant mice that have been engineered to lose the expression of tumour suppressor genes (TSGs) or express oncogenes or dominant negative TSGs from



**Figure 3** (A) Schematic depiction of various pathways and growth factors (green dots) interacting between stromal cells (yellow) and cancer cells (blue). (B) Sonic hedgehog (SHH) inhibition decreases desmoplasia (fibrous reddish bundles) and increases the density of tumour vessels (red) around cancer cells (blue). ECM, extracellular matrix; FGF, fibroblast growth factor; IGF, insulin-like growth factor 1; PDGF, platelet-derived growth factor; SDF, stromal cell-derived factor; TGF $\beta$ , transforming growth factor  $\beta$ ; VEGF, vascular endothelial growth factor.

their native promoters by using knock-out or knock-in technologies. To control and direct the spatiotemporal expression of the mutant alleles, site-specific recombinases such as Cre are used. Two GEMMs were recently developed that bear striking resemblance to human PDA. The first is based on mutation of the endogenous murine *Kras* gene specifically in pancreatic progenitor cells by crossing mice with a conditionally activated *Kras* allele (LSL-*Kras*<sup>G12D</sup>) to transgenic strains that express Cre recombinase in pancreatic lineages (PdxCre or p48Cre). These 'KC' mice develop murine PanIN lesions with 100% penetrance, but only a small subset of these animals progress to PDA at an advanced age, suggesting that additional genetic alterations are necessary for tumour formation.<sup>70</sup> To accelerate the process of tumorigenesis, PdxCre-expressing compound mutant mice were generated with conditional mutations in both *Kras* and *Trp53* in analogy to the genetic alterations in human PDA. These 'KPC' mice develop advanced PDA with 100% penetrance at an early age, thus recapitulating human PDA including histopathological similarities in neoplastic cells, desmoplasia, occurrence and site of metastasis and comorbidities such as cachexia, activation of biochemical pathways and evidence for genomic instability.<sup>71</sup> Further important work was done by the Barbacid group providing striking evidence that temporal expression of endogenous *Kras* in acinar cells of adult mice results in PanINs and invasive PDA only in the context of caerulein-induced pancreatitis.<sup>72</sup> Thus, GEMMs (in contrast to xenograft models) are particularly suited to elucidate the role of the tumour-microenvironment interactions in the disease initiation and progression of pancreatic cancer. Furthermore, preclinical studies can be established that examine the effects of drugs on the

tumour microenvironment and specifically target tumour-associated stromal cells.

### STROMA-TARGETED THERAPIES IN PANCREATIC CANCER

Over the last decade, major efforts have been undertaken to enhance the effect of the current standard of care chemotherapy, gemcitabine, by the combination with a second cytotoxic drug.<sup>73</sup> To this end, large randomised phase III trials were performed to evaluate additional effects of cisplatin,<sup>74,75</sup> oxaliplatin,<sup>76,77</sup> 5-FU,<sup>78</sup> irinotecan,<sup>79,80</sup> exatecan<sup>81</sup> and pemetrexed,<sup>82</sup> but there was no significant overall survival benefit. For the combination capecitabine and gemcitabine versus gemcitabine alone, initial data suggest no significant advantage for overall survival.<sup>83</sup> Notably, a recent phase III trial revealed a trend towards improved overall survival, and a meta-analysis involving 935 patients showed a significant survival benefit for the combination of capecitabine and gemcitabine.<sup>84</sup> Until recently, the mechanism for the extremely poor responsiveness to therapeutic agents has been mainly ascribed to the heterogeneity of transformed cells rather than to the tumour micro-environment.

The improved knowledge of the genetic and molecular alterations not only occurring in tumour cells but also in the surrounding stromal cells has recently led to the development of novel therapeutic approaches specifically targeting profibrotic pathways, cytokines and growth factors involved in tumour desmoplasia and angiogenesis to control tumour growth, prevent formation of metastases and increase the cytotoxic effect of chemotherapeutics.

Following promising results from preclinical studies, marimastat, a broad-spectrum synthetic MMP inhibitor, was the first compound tested in a large randomised phase III trial in 414 patients with advanced pancreatic cancer. Initially fuelled with great enthusiasm, the results were rather disappointing as neither marimastat alone nor the combination of marimastat and gemcitabine showed any improvement in overall survival or tumour control compared with gemcitabine alone.<sup>85,86</sup> One year later in 2003, Moore *et al* reported the results of a phase III trial with BAY-12-9566, a specific inhibitor of MMP-2, MMP-3, MMP-9 and MMP-13. Patients with locally advanced or metastatic pancreatic cancer were treated with BAY-12-9566 or standard intravenous gemcitabine; however, the study was discontinued after completion of the second interim analysis showed that the new substance was significantly inferior to gemcitabine (median overall survival 3.74 months vs 6.59 months).<sup>87</sup> As pointed out earlier, the role of proteases in cancer biology, in particular MMPs, is highly complex and the failure of broad-spectrum anti-MMP therapies might at least partly be explained by the fact that MMPs have pro-tumorigenic as well as tumour suppressive functions.

As cardinal mediators of tumour neoangiogenesis, overexpression of VEGF and its receptors

(VEGFR-1, VEGFR-2 and VEGFR-3) has been associated with poor prognosis and increased metastatic potential in pancreatic cancer.<sup>88</sup> Bevacizumab, a recombinant humanised anti-VEGF monoclonal antibody approved for the treatment of colon cancer, has also been investigated in PDA. Despite promising results from a previous phase II trial,<sup>69</sup> the combination of bevacizumab and gemcitabine failed to significantly prolong survival in a large phase III trial with 602 patients with pancreatic cancer.<sup>89</sup> Similar discouraging results were obtained with a clinical phase II trial in 103 patients with pancreatic cancer using gemcitabine and axitinib, an oral inhibitor of VEGFR-1, VEGFR-2 and VEGFR-3.<sup>90</sup>

The only targeted agent which demonstrated a statistically significant effect on overall survival is erlotinib, a small molecule inhibitor of the EGFR tyrosine kinase. EGFR is frequently overexpressed in pancreatic cancer and correlates with poor prognosis and disease progression.<sup>91</sup> EGFR signalling has also been shown to impact pancreatic stromal reaction by activating PSCs.<sup>92</sup> The combination of gemcitabine and erlotinib conferred a marginal but significant improvement in survival over gemcitabine alone in a large phase III randomised trial (median survival 6.24 months vs 5.91 months).<sup>93</sup>

Taken together, numerous clinical trials have failed to substantially improve the prognosis of patients with advanced pancreatic cancer during the last decade. The general resistance of human PDA to systemic therapies *in vivo* is unusual compared with other solid carcinomas, casting doubt on the transferability of preclinical results to the clinical situation in PDA.<sup>94</sup> It can be assumed that the lack of survival benefit shown by conventional and targeted agents in patients with pancreatic cancer might at least partly evolve from the predominant desmoplastic stroma reaction and the pronounced hypovascularity.

Indeed, experimental evidence was provided very recently demonstrating that the hypovascular tumour stroma affects delivery of chemotherapeutics in a GEMM of PDA. We showed that the active intracellular metabolite of gemcitabine, 2',2'-difluorodeoxycytidine triphosphate (dFdCTP), was detectable in transplanted xenograft tumours but undetectable in tumours of KPC mice which are characterised by a pronounced desmoplastic reaction highly resembling the human PDA phenotype. Subsequent inhibition of the SHH signalling pathway by IPI-926, a semisynthetic derivative of cycloamine, resulted in a dramatic depletion of stromal components paralleled by an increase in intratumoral vascular density. Although stroma depletion alone had no immediate antitumour effect in this experimental setting, co-administration of gemcitabine and IPI-926 resulted in a significantly enhanced intratumoral concentration of dFdCTP, transient disease stabilisation and a statistically significant prolongation of survival.<sup>7</sup> However, the pronounced stromal reaction ultimately returned in the KPC model, suggesting that

the tumours can adapt to chronic SHH inhibition.<sup>7</sup> The effects of SHH inhibition on the stromal and vascular architecture are schematically displayed in figure 3B.

This study therefore provides a proof of principle that disruption of the desmoplastic stroma facilitates the delivery and enhances the efficacy of gemcitabine in PDA. Poor perfusion and a deficient non-angiogenic vasculature limits drug delivery and may also help to explain the recent failures of anti-VEGF strategies in pancreatic cancer.

Three months after we published these murine data, exciting clinical results on non-invasive quantification of blood flow and metabolic activity of pancreatic tumours using oxygen-15-labelled water [<sup>15</sup>O]-H<sub>2</sub>O and [<sup>18</sup>F]-fluorodeoxyglucose (FDG) positron emission tomography (PET)/CT imaging were presented by a Finnish group.<sup>95</sup> In this small study, pancreatic tumours were characterised by reduced blood flow and high metabolic activity compared with normal pancreatic tissue.<sup>95</sup> Furthermore, a high ratio of glucose uptake to blood flow was a predictor of poor prognosis, further supporting the novel concept that a highly dynamic but hypovascular tumour microenvironment contributes to chemoresistance and poor therapeutic outcome in patients with pancreatic cancer by creating barriers for drug delivery.<sup>95</sup>

## CONCLUSIONS

The desmoplastic hypovascular tumour microenvironment consisting of large amounts of ECM proteins, activated fibroblasts, stellate cells and inflammatory cells is now recognised to represent the cardinal histological hallmark feature of PDA. Recent preclinical and clinical data suggest that this stromal microenvironment creates a 'fortress-like' hypovascular barrier that impairs the delivery of chemotherapeutics and promotes aggressive neoplastic cell behaviour. The extremely poor prognosis and resistance to systemic therapies might therefore be partly explained by inefficient drug delivery to the tumour cells rather than drug resistance of the tumour cells. Breaching this 'stroma fortress' represents a promising strategy to improve the delivery and efficacy of systemic chemotherapeutics and might open new therapeutic avenues for patients with PDA. One challenge in translating these findings to the clinical care of patients is the need to develop means to accurately measure drug levels in PDA tumours with non-invasive techniques or small biopsies. However, clinical trial design is often hampered by the fact that PDA most commonly occurs in elderly people and is associated with severe cachexia and other age-related conditions. GEMMs of PDA are particularly suited to study the biology and treatment of this disease and may also be useful for developing novel pharmacokinetic approaches. GEMMs should also help define the role of PSCs in stimulating the desmoplastic stroma, and determine whether these are the target cells of hedgehog inhibitors. Additional pathways known to be involved in the activation of PSCs such as FGF,

## Recent advances in basic science

## Key points 1: Basic science

- ▶ A pronounced desmoplastic and hypovascular microenvironment is a hallmark feature in pancreatic cancer.
- ▶ The stromal microenvironment contributes to disease progression, promoting tumour growth and invasion.
- ▶ Pancreatic stellate cells have emerged as pancreas-specific mesenchymal cells and key regulators of desmoplasia in pancreatic cancer.
- ▶ The cellular and molecular mechanisms underlying the regulation and perpetuation of desmoplasia in pancreatic cancer are still poorly understood.

## Key points 2: Clinical science

- ▶ The devastating prognosis for patients with pancreatic cancer has remained virtually unchanged over the last three decades.
- ▶ Targeting the stromal microenvironment is a novel and promising concept for tailored therapies in pancreatic cancer.
- ▶ Genetically engineered mice are particularly suited to study the tumour microenvironment and test novel therapeutic regimens targeting the tumour stroma (eg, sonic hedgehog inhibition).
- ▶ The extremely poor prognosis and the resistance to systemic chemotherapies are at least partly explained by low drug delivery caused by stromal barriers rather than epithelial tumour cell resistance itself.
- ▶ The development of effective means to measure intratumoral levels of chemotherapy (eg, dFdCTP) with either non-invasive imaging or using reliable microscopic biopsies is an important challenge for the field of pancreatic cancer.

PDGF or IGF-1 should also be interrogated as potential therapeutic targets in the GEMM.<sup>61 96</sup> Furthermore, efforts aimed at inducing PSC trans-differentiation from an activated to a quiescent state via administration of vitamin A analogues could also be an attractive modality as reported in culture-activated rat PSCs.<sup>96</sup>

However, as observed in the mouse PDA model, tumours adapt to chronic inhibition of profibrotic signalling and ultimately resume stromal desmoplasia and hypovascularity. We therefore anticipate that multiple approaches that target the PDA stroma will probably be necessary in order to circumvent this adaptive response and maximise therapeutic benefits for patients.

**Competing interests** None.

**Provenance and peer review** Not commissioned; externally peer reviewed.

## REFERENCES

1. **Jemal A**, Siegel R, Ward E, *et al*. Cancer statistics, 2008. *CA Cancer J Clin* 2008;**58**:71–96.
2. **Burris HA 3rd**, Moore MJ, Andersen J, *et al*. Improvements in survival and clinical benefit with gemcitabine as first-line therapy for patients with advanced pancreas cancer: a randomized trial. *J Clin Oncol* 1997;**15**:2403–13.
3. **Rothenberg ML**, Moore MJ, Cripps MC, *et al*. A phase II trial of gemcitabine in patients with 5-FU-refractory pancreas cancer. *Ann Oncol* 1996;**7**:347–53.
4. **Crist DW**, Sitzmann JV, Cameron JL. Improved hospital morbidity, mortality, and survival after the Whipple procedure. *Ann Surg* 1987;**206**:358–65.

5. **Geer RJ**, Brennan MF. Prognostic indicators for survival after resection of pancreatic adenocarcinoma. *Am J Surg* 1993;**165**:68–72; discussion 3.
6. **Trede M**, Schwall G, Saeger HD. Survival after pancreatoduodenectomy. 118 consecutive resections without an operative mortality. *Ann Surg* 1990;**211**:447–58.
7. **Olive KP**, Jacobetz MA, Davidson CJ, *et al*. Inhibition of Hedgehog signaling enhances delivery of chemotherapy in a mouse model of pancreatic cancer. *Science* 2009;**324**:1457–61.
8. **Hilgers W**, Kern SE. Molecular genetic basis of pancreatic adenocarcinoma. *Genes Chromosomes Cancer* 1999;**26**:1–12.
9. **Hruban RH**, Wilentz RE, Kern SE. Genetic progression in the pancreatic ducts. *Am J Pathol* 2000;**156**:1821–5.
10. **Hruban RH**, Canto MI, Griffin C, *et al*. Treatment of familial pancreatic cancer and its precursors. *Curr Treat Options Gastroenterol* 2005;**8**:365–75.
11. **Vogelstein B**, Fearon ER, Hamilton SR, *et al*. Genetic alterations during colorectal-tumor development. *N Engl J Med* 1988;**319**:525–32.
12. **Brentnall TA**. Management strategies for patients with hereditary pancreatic cancer. *Curr Treat Options Oncol* 2005;**6**:437–45.
13. **Jones S**, Hruban RH, Kamiyama M, *et al*. Exomic sequencing identifies PALB2 as a pancreatic cancer susceptibility gene. *Science* 2009;**324**:217.
14. **Hill R**, Song Y, Cardiff RD, *et al*. Selective evolution of stromal mesenchyme with p53 loss in response to epithelial tumorigenesis. *Cell* 2005;**123**:1001–11.
15. **Bhowmick NA**, Chytil A, Pliehl D, *et al*. TGF-beta signaling in fibroblasts modulates the oncogenic potential of adjacent epithelia. *Science* 2004;**303**:848–51.
16. **Moinfar F**, Man YG, Arnould L, *et al*. Concurrent and independent genetic alterations in the stromal and epithelial cells of mammary carcinoma: implications for tumorigenesis. *Cancer Res* 2000;**60**:2562–6.
17. **Shekhar MP**, Werdell J, Santner SJ, *et al*. Breast stroma plays a dominant regulatory role in breast epithelial growth and differentiation: implications for tumor development and progression. *Cancer Res* 2001;**61**:1320–6.
18. **Olumi AF**, Grossfeld GD, Hayward SW, *et al*. Carcinoma-associated fibroblasts direct tumor progression of initiated human prostatic epithelium. *Cancer Res* 1999;**59**:5002–11.
19. **Patocs A**, Zhang L, Xu Y, *et al*. Breast-cancer stromal cells with TP53 mutations and nodal metastases. *N Engl J Med* 2007;**357**:2543–51.
20. **Bailey JM**, Swanson BJ, Hamada T, *et al*. Sonic hedgehog promotes desmoplasia in pancreatic cancer. *Clin Cancer Res* 2008;**14**:5995–6004.
21. **Finak G**, Bertos N, Pepin F, *et al*. Stromal gene expression predicts clinical outcome in breast cancer. *Nat Med* 2008;**14**:518–27.
22. **Guturu P**, Shah V, Urrutia R. Interplay of tumor microenvironment cell types with parenchymal cells in pancreatic cancer development and therapeutic implications. *J Gastrointest Cancer* 2009;**40**:1–9.
23. **Farmer P**, Bonnefoi H, Anderle P, *et al*. A stroma-related gene signature predicts resistance to neoadjuvant chemotherapy in breast cancer. *Nat Med* 2009;**15**:68–74.
24. **Chu GC**, Kimmelman AC, Hezel AF, *et al*. Stromal biology of pancreatic cancer. *J Cell Biochem* 2007;**101**:887–907.
25. **Ide T**, Kitajima Y, Miyoshi A, *et al*. Tumor-stromal cell interaction under hypoxia increases the invasiveness of pancreatic cancer cells through the hepatocyte growth factor/c-Met pathway. *Int J Cancer* 2006;**119**:2750–9.
26. **Mahadevan D**, Von Hoff DD. Tumor-stroma interactions in pancreatic ductal adenocarcinoma. *Mol Cancer Ther* 2007;**6**:1186–97.
27. **Jones L**, Ghaneh P, Humphreys M, *et al*. The matrix metalloproteinases and their inhibitors in the treatment of pancreatic cancer. *Ann NY Acad Sci* 1999;**880**:288–307.
28. **Hidalgo M**, Eckhardt SG. Development of matrix metalloproteinase inhibitors in cancer therapy. *J Natl Cancer Inst* 2001;**93**:178–93.
29. **Ellenrieder V**, Alber B, Lacher U, *et al*. Role of MT-MMPs and MMP-2 in pancreatic cancer progression. *Int J Cancer* 2000;**85**:14–20.
30. **Gress TM**, Menke A, Bachem M, *et al*. Role of extracellular matrix in pancreatic diseases. *Digestion* 1998;**59**:625–37.
31. **Bramhall SR**, Stamp GW, Dunn J, *et al*. Expression of collagenase (MMP2), stromelysin (MMP3) and tissue inhibitor of the metalloproteinases (TIMP1) in pancreatic and ampullary disease. *Br J Cancer* 1996;**73**:972–8.
32. **Buchholz M**, Biebl A, Neesse A, *et al*. SERPINE2 (protease nexin I) promotes extracellular matrix production and local invasion of pancreatic tumors in vivo. *Cancer Res* 2003;**63**:4945–51.

33. **Bachem MG**, Zhou S, Buck K, *et al.* Pancreatic stellate cells—role in pancreas cancer. *Langenbecks Arch Surg* 2008;**393**:891–900.
34. **Schneiderhan W**, Diaz F, Fundel M, *et al.* Pancreatic stellate cells are an important source of MMP-2 in human pancreatic cancer and accelerate tumor progression in a murine xenograft model and CAM assay. *J Cell Sci* 2007;**120**:512–19.
35. **Farrow B**, Sugiyama Y, Chen A, *et al.* Inflammatory mechanisms contributing to pancreatic cancer development. *Ann Surg* 2004;**239**:763–9; discussion 9–71.
36. **Hwang RF**, Moore T, Arumugam T, *et al.* Cancer-associated stromal fibroblasts promote pancreatic tumor progression. *Cancer Res* 2008;**68**:918–26.
37. **Binkley CE**, Zhang L, Greenson JK, *et al.* The molecular basis of pancreatic fibrosis: common stromal gene expression in chronic pancreatitis and pancreatic adenocarcinoma. *Pancreas* 2004;**29**:254–63.
38. **Sato N**, Maehara N, Goggins M. Gene expression profiling of tumor-stromal interactions between pancreatic cancer cells and stromal fibroblasts. *Cancer Res* 2004;**64**:6950–6.
39. **Koenig A**, Mueller C, Hasel C, *et al.* Collagen type I induces disruption of E-cadherin-mediated cell-cell contacts and promotes proliferation of pancreatic carcinoma cells. *Cancer Res* 2006;**66**:4662–71.
40. **Reiser-Erkan C**, Erkan M, Pan Z, *et al.* Hypoxia-inducible proto-oncogene Pim-1 is a prognostic marker in pancreatic ductal adenocarcinoma. *Cancer Biol Ther* 2008;**7**:1352–9.
41. **Yauch RL**, Gould SE, Scales SJ, *et al.* A paracrine requirement for hedgehog signalling in cancer. *Nature* 2008;**455**:406–10.
42. **Thayer SP**, di Magliano MP, Heiser PV, *et al.* Hedgehog is an early and late mediator of pancreatic cancer tumorigenesis. *Nature* 2003;**425**:851–6.
43. **Walter K**, Omura N, Hong SM, *et al.* Overexpression of smoothensin activates the sonic hedgehog signaling pathway in pancreatic cancer-associated fibroblasts. *Clin Cancer Res* 2010;**16**:1781–9.
44. **Tian H**, Callahan CA, DuPree KJ, *et al.* Hedgehog signaling is restricted to the stromal compartment during pancreatic carcinogenesis. *Proc Natl Acad Sci USA* 2009;**106**:4254–9.
45. **Apte MV**, Park S, Phillips PA, *et al.* Desmoplastic reaction in pancreatic cancer: role of pancreatic stellate cells. *Pancreas* 2004;**29**:179–87.
46. **Buchholz M**, Kestler HA, Holzmann K, *et al.* Transcriptome analysis of human hepatic and pancreatic stellate cells: organ-specific variations of a common transcriptional phenotype. *J Mol Med* 2005;**83**:795–805.
47. **Bachem MG**, Schneider E, Gross H, *et al.* Identification, culture, and characterization of pancreatic stellate cells in rats and humans. *Gastroenterology* 1998;**115**:421–32.
48. **Apte MV**, Haber PS, Applegate TL, *et al.* Periacinar stellate shaped cells in rat pancreas: identification, isolation, and culture. *Gut* 1998;**43**:128–33.
49. **Senoo H**, Kojima N, Sato M. Vitamin A-storing cells (stellate cells). *Vitam Horm* 2007;**75**:131–59.
50. **Phillips PA**, McCarroll JA, Park S, *et al.* Rat pancreatic stellate cells secrete matrix metalloproteinases: implications for extracellular matrix turnover. *Gut* 2003;**52**:275–82.
51. **Yoshida S**, Yokota T, Ujiki M, *et al.* Pancreatic cancer stimulates pancreatic stellate cell proliferation and TIMP-1 production through the MAP kinase pathway. *Biochem Biophys Res Commun* 2004;**323**:1241–5.
52. **Erkan M**, Kleeff J, Gorbachevski A, *et al.* Periostin creates a tumor-supportive microenvironment in the pancreas by sustaining fibrogenic stellate cell activity. *Gastroenterology* 2007;**132**:1447–64.
53. **Erkan M**, Reiser-Erkan C, Michalski CW, *et al.* Cancer-stellate cell interactions perpetuate the hypoxia-fibrosis cycle in pancreatic ductal adenocarcinoma. *Neoplasia* 2009;**11**:497–508.
54. **O'Reilly MS**, Boehm T, Shing Y, *et al.* Endostatin: an endogenous inhibitor of angiogenesis and tumor growth. *Cell* 1997;**88**:277–85.
55. **Bachem MG**, Schunemann M, Ramadani M, *et al.* Pancreatic carcinoma cells induce fibrosis by stimulating proliferation and matrix synthesis of stellate cells. *Gastroenterology* 2005;**128**:907–21.
56. **Neesse A**, Wagner M, Ellenrieder V, *et al.* Pancreatic stellate cells potentiate proinvasive effects of SERPINE2 expression in pancreatic cancer xenograft tumors. *Pancreatology* 2007;**7**:380–5.
57. **Vonlaufen A**, Joshi S, Qu C, *et al.* Pancreatic stellate cells: partners in crime with pancreatic cancer cells. *Cancer Res* 2008;**68**:2085–93.
58. **Mantoni TS**, Schendel RR, Rodel F, *et al.* Stromal SPARC expression and patient survival after chemoradiation for non-resectable pancreatic adenocarcinoma. *Cancer Biol Ther* 2008;**7**:1806–15.
59. **Erkan M**, Michalski CW, Rieder S, *et al.* The activated stroma index is a novel and independent prognostic marker in pancreatic ductal adenocarcinoma. *Clin Gastroenterol Hepatol* 2008;**6**:1155–61.
60. **Infante JR**, Matsubayashi H, Sato N, *et al.* Peritumoral fibroblast SPARC expression and patient outcome with resectable pancreatic adenocarcinoma. *J Clin Oncol* 2007;**25**:319–25.
61. **Korc M**. Pancreatic cancer-associated stroma production. *Am J Surg* 2007;**194**:S84–6.
62. **Vaquero EC**, Edderkaoui M, Nam KJ, *et al.* Extracellular matrix proteins protect pancreatic cancer cells from death via mitochondrial and nonmitochondrial pathways. *Gastroenterology* 2003;**125**:1188–202.
63. **Hruban RH**, Adsay NV, Albores-Saavedra J, *et al.* Pathology of genetically engineered mouse models of pancreatic exocrine cancer: consensus report and recommendations. *Cancer Res* 2006;**66**:95–106.
64. **Sorio C**, Bonora A, Orlandini S, *et al.* Successful xenografting of cryopreserved primary pancreatic cancers. *Virchows Arch* 2001;**438**:154–8.
65. **Shu Q**, Wong KK, Su JM, *et al.* Direct orthotopic transplantation of fresh surgical specimen preserves CD133+ tumor cells in clinically relevant mouse models of medulloblastoma and glioma. *Stem Cells* 2008;**26**:1414–24.
66. **Rubio-Viqueira B**, Jimeno A, Cusatis G, *et al.* An in vivo platform for translational drug development in pancreatic cancer. *Clin Cancer Res* 2006;**12**:4652–61.
67. **Gopinathan A**, Tuveson DA. The use of GEM models for experimental cancer therapeutics. *Dis Model Mech* 2008;**1**:83–6.
68. **Bocci G**, Danesi R, Marangoni G, *et al.* Antiangiogenic versus cytotoxic therapeutic approaches to human pancreas cancer: an experimental study with a vascular endothelial growth factor receptor-2 tyrosine kinase inhibitor and gemcitabine. *Eur J Pharmacol* 2004;**498**:9–18.
69. **Kindler HL**, Friberg G, Singh DA, *et al.* Phase II trial of bevacizumab plus gemcitabine in patients with advanced pancreatic cancer. *J Clin Oncol* 2005;**23**:8033–40.
70. **Hingorani SR**, Petricoin EF, Maitra A, *et al.* Preinvasive and invasive ductal pancreatic cancer and its early detection in the mouse. *Cancer Cell* 2003;**4**:437–50.
71. **Hingorani SR**, Wang L, Multani AS, *et al.* Trp53R172H and KrasG12D cooperate to promote chromosomal instability and widely metastatic pancreatic ductal adenocarcinoma in mice. *Cancer Cell* 2005;**7**:469–83.
72. **Guerra C**, Schuhmacher AJ, Canamero M, *et al.* Chronic pancreatitis is essential for induction of pancreatic ductal adenocarcinoma by K-Ras oncogenes in adult mice. *Cancer Cell* 2007;**11**:291–302.
73. **Desai SP**, Zalupski MM. Optimum cytotoxic therapy for advanced pancreatic cancer. In: Lowy AM, Leach SD, Philip PA, eds. *Pancreatic Cancer*. New York: Springer, 2008:511–34.
74. **Colucci G**, Giuliani F, Gebbia V, *et al.* Gemcitabine alone or with cisplatin for the treatment of patients with locally advanced and/or metastatic pancreatic carcinoma: a prospective, randomized phase III study of the Gruppo Oncologia dell'Italia Meridionale. *Cancer* 2002;**94**:902–10.
75. **Heinemann V**, Quietzsch D, Gieseler F, *et al.* Randomized phase III trial of gemcitabine plus cisplatin compared with gemcitabine alone in advanced pancreatic cancer. *J Clin Oncol* 2006;**24**:3946–52.
76. **Louvet C**, Labianca R, Hammel P, *et al.* Gemcitabine in combination with oxaliplatin compared with gemcitabine alone in locally advanced or metastatic pancreatic cancer: results of a GERCOR and GISCAD phase III trial. *J Clin Oncol* 2005;**23**:3509–16.
77. **Poplin E**, Feng Y, Berlin J, *et al.* Phase III, randomized study of gemcitabine and oxaliplatin versus gemcitabine (fixed-dose rate infusion) compared with gemcitabine (30-minute infusion) in patients with pancreatic carcinoma E6201: a trial of the Eastern Cooperative Oncology Group. *J Clin Oncol* 2009;**27**:3778–85.
78. **Berlin JD**, Catalano P, Thomas JP, *et al.* Phase III study of gemcitabine in combination with fluorouracil versus gemcitabine alone in patients with advanced pancreatic carcinoma: Eastern Cooperative Oncology Group Trial E2297. *J Clin Oncol* 2002;**20**:3270–5.
79. **Rocha Lima CM**, Green MR, Rotche R, *et al.* Irinotecan plus gemcitabine results in no survival advantage compared with gemcitabine monotherapy in patients with locally advanced or metastatic pancreatic cancer despite increased tumor response rate. *J Clin Oncol* 2004;**22**:3776–83.
80. **Stathopoulos GP**, Syrigos K, Aravantinos G, *et al.* A multicenter phase III trial comparing irinotecan-gemcitabine (IG) with

## Recent advances in basic science

- gemcitabine (G) monotherapy as first-line treatment in patients with locally advanced or metastatic pancreatic cancer. *Br J Cancer* 2006;**95**:587–92.
81. **Abou-Alfa GK**, Letourneau R, Harker G, *et al*. Randomized phase III study of exatecan and gemcitabine compared with gemcitabine alone in untreated advanced pancreatic cancer. *J Clin Oncol* 2006;**24**:4441–7.
  82. **Oettle H**, Richards D, Ramanathan RK, *et al*. A phase III trial of pemetrexed plus gemcitabine versus gemcitabine in patients with unresectable or metastatic pancreatic cancer. *Ann Oncol* 2005;**16**:1639–45.
  83. **Herrmann R**, Bodoky G, Ruhstaller T, *et al*. Gemcitabine plus capecitabine compared with gemcitabine alone in advanced pancreatic cancer: a randomized, multicenter, phase III trial of the Swiss Group for Clinical Cancer Research and the Central European Cooperative Oncology Group. *J Clin Oncol* 2007;**25**:2212–17.
  84. **Cunningham D**, Chau I, Stocken DD, *et al*. Phase III randomized comparison of gemcitabine versus gemcitabine plus capecitabine in patients with advanced pancreatic cancer. *J Clin Oncol* 2009;**27**:5513–18.
  85. **Bramhall SR**, Rosemurgy A, Brown PD, *et al*. Marimastat as first-line therapy for patients with unresectable pancreatic cancer: a randomized trial. *J Clin Oncol* 2001;**19**:3447–55.
  86. **Bramhall SR**, Schulz J, Nemunaitis J, *et al*. A double-blind placebo-controlled, randomised study comparing gemcitabine and marimastat with gemcitabine and placebo as first line therapy in patients with advanced pancreatic cancer. *Br J Cancer* 2002;**87**:161–7.
  87. **Moore MJ**, Hamm J, Dancey J, *et al*. Comparison of gemcitabine versus the matrix metalloproteinase inhibitor BAY 12-9566 in patients with advanced or metastatic adenocarcinoma of the pancreas: a phase III trial of the National Cancer Institute of Canada Clinical Trials Group. *J Clin Oncol* 2003;**21**:3296–302.
  88. **Seo Y**, Baba H, Fukuda T, *et al*. High expression of vascular endothelial growth factor is associated with liver metastasis and a poor prognosis for patients with ductal pancreatic adenocarcinoma. *Cancer* 2000;**88**:2239–45.
  89. **Kindler HL**, Niedzwiecki D, Hollis D, *et al*. A double-blind, placebo-controlled, randomized phase III trial of gemcitabine (G) plus bevacizumab (B) versus gemcitabine plus placebo (P) in patients (pts) with advanced pancreatic cancer (PC): a preliminary analysis of Cancer and Leukemia Group B (CALGB). ASCO Meeting Abstracts 2007:4508.
  90. **Spano JP**, Chodkiewicz C, Maurel J, *et al*. Efficacy of gemcitabine plus axitinib compared with gemcitabine alone in patients with advanced pancreatic cancer: an open-label randomised phase II study. *Lancet* 2008;**371**:2101–8.
  91. **Ueda S**, Ogata S, Tsuda H, *et al*. The correlation between cytoplasmic overexpression of epidermal growth factor receptor and tumor aggressiveness: poor prognosis in patients with pancreatic ductal adenocarcinoma. *Pancreas* 2004;**29**:e1–8.
  92. **Blaine SA**, Ray KC, Branch KM, *et al*. Epidermal growth factor receptor regulates pancreatic fibrosis. *Am J Physiol Gastrointest Liver Physiol* 2009;**297**:G434–41.
  93. **Moore MJ**, Goldstein D, Hamm J, *et al*. Erlotinib plus gemcitabine compared with gemcitabine alone in patients with advanced pancreatic cancer: a phase III trial of the National Cancer Institute of Canada Clinical Trials Group. *J Clin Oncol* 2007;**25**:1960–6.
  94. **Johnson JI**, Decker S, Zaharevitz D, *et al*. Relationships between drug activity in NCI preclinical in vitro and in vivo models and early clinical trials. *Br J Cancer* 2001;**84**:1424–31.
  95. **Komar G**, Kauhanen S, Liukko K, *et al*. Decreased blood flow with increased metabolic activity: a novel sign of pancreatic tumor aggressiveness. *Clin Cancer Res* 2009;**15**:5511–17.
  96. **Omary MB**, Lugea A, Lowe AW, *et al*. The pancreatic stellate cell: a star on the rise in pancreatic diseases. *J Clin Invest* 2007;**117**:50–9.

# Information in a hurry...

If you need the latest information in emergency care then you need the **Emergency Medicine Journal**. Packed with research, educational papers and debate of all aspects of emergency medicine, the journal will make sure you know everything you need to.

FOR MORE DETAILS OR TO SUBSCRIBE,  
VISIT THE WEBSITE TODAY

**emj.bmj.com**



BMJ Journals





## Stromal biology and therapy in pancreatic cancer

Albrecht Neesse, Patrick Michl, Kristopher K Frese, et al.

*Gut* 2011 60: 861-868 originally published online October 21, 2010  
doi: 10.1136/gut.2010.226092

---

Updated information and services can be found at:

<http://gut.bmj.com/content/60/6/861.full.html>

---

*These include:*

### References

This article cites 94 articles, 40 of which can be accessed free at:

<http://gut.bmj.com/content/60/6/861.full.html#ref-list-1>

Article cited in:

<http://gut.bmj.com/content/60/6/861.full.html#related-urls>

### Email alerting service

Receive free email alerts when new articles cite this article. Sign up in the box at the top right corner of the online article.

---

### Topic Collections

Articles on similar topics can be found in the following collections

[Gut Education](#) (56 articles)

[GUT Recent advances in basic science](#) (65 articles)

[Pancreas and biliary tract](#) (1826 articles)

[Pancreatic cancer](#) (588 articles)

---

### Notes

---

To request permissions go to:

<http://group.bmj.com/group/rights-licensing/permissions>

To order reprints go to:

<http://journals.bmj.com/cgi/reprintform>

To subscribe to BMJ go to:

<http://group.bmj.com/subscribe/>